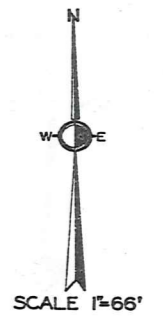
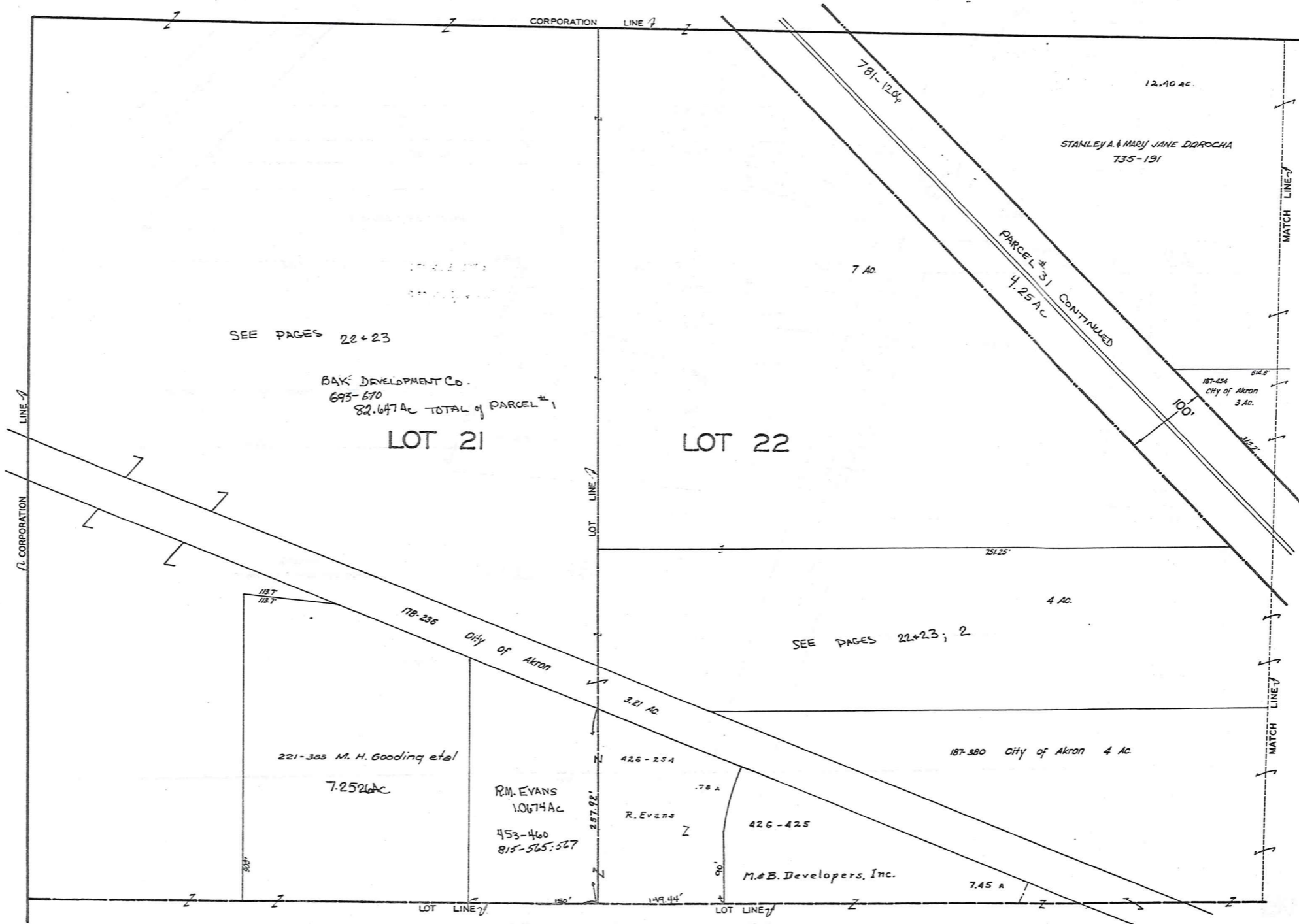


MIDDLEFIELD VILLAGE



SCALE 1"=66'

JANUARY 1, 1989

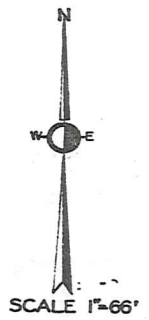
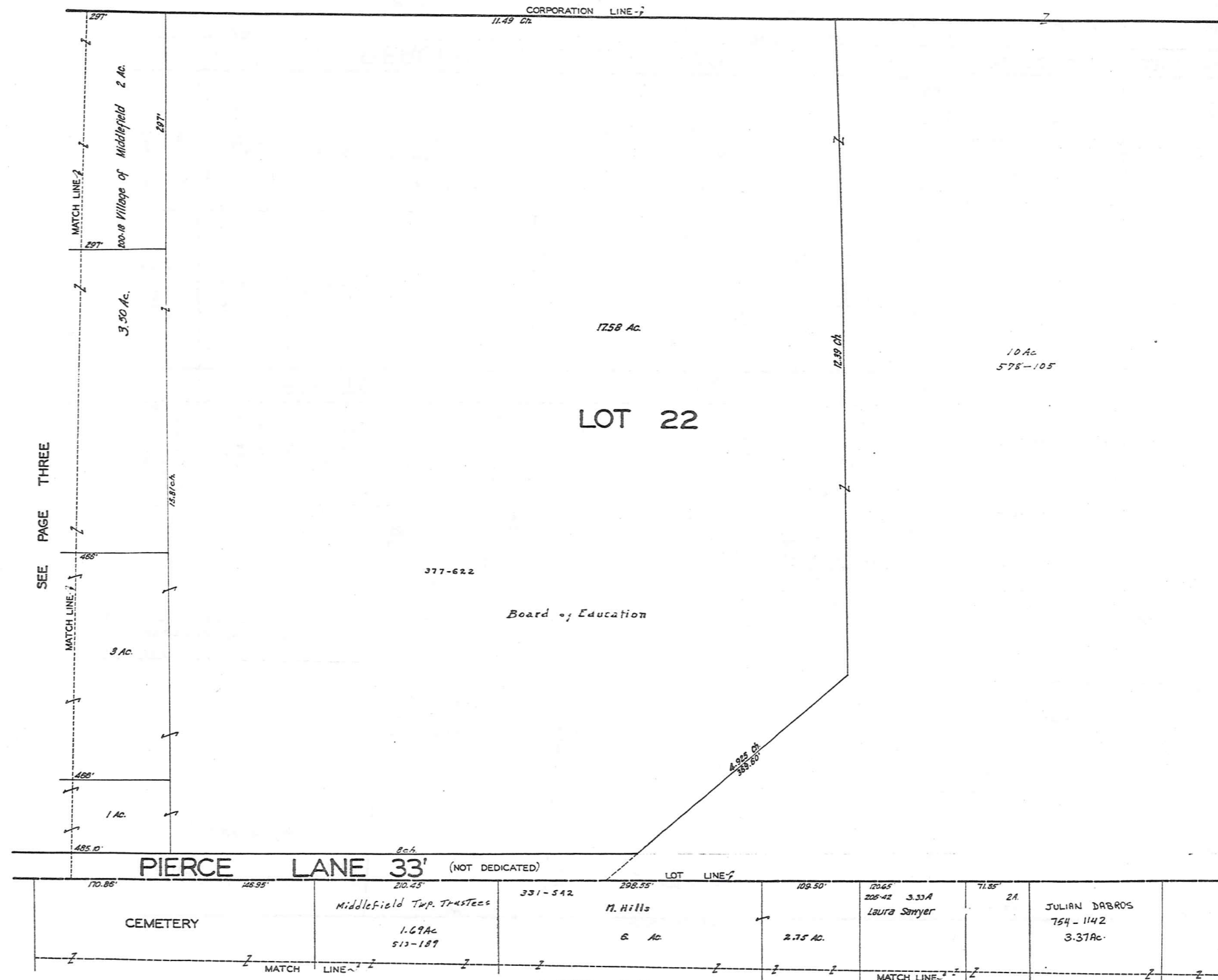
SEE PAGE TWO

SEE PAGE FIVE





MIDDLEFIELD VILLAGE



SEE PAGE THREE

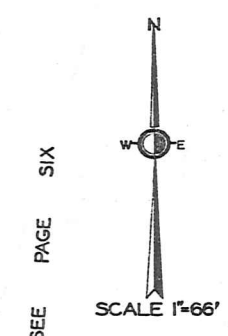
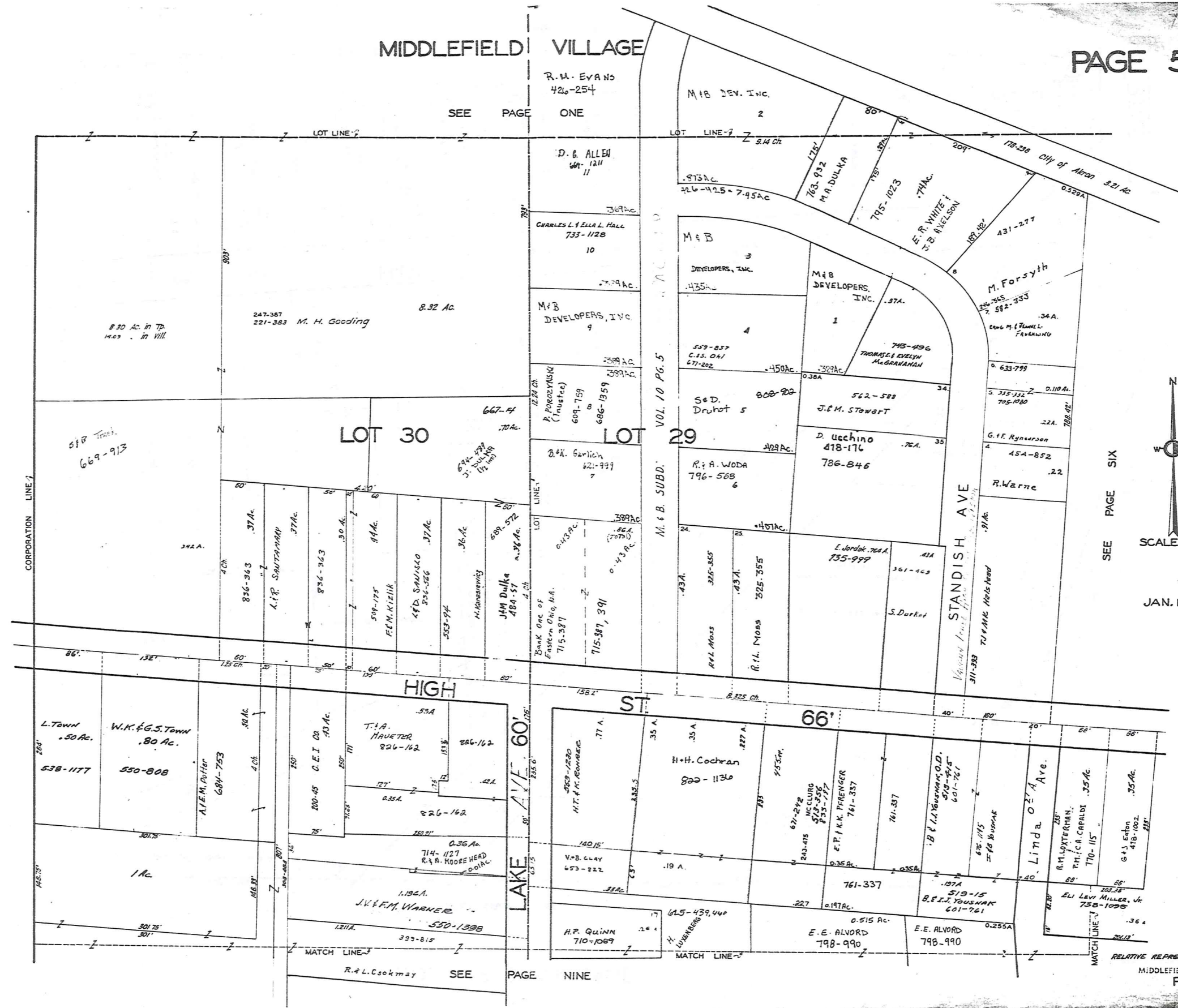
SEE PAGE EIGHT

JANUARY 1, 1989

RELATIVE REPRESENTATION

MIDDLEFIELD VILLAGE  
PG. 4

MIDDLEFIELD VILLAGE



SEE PAGE SIX

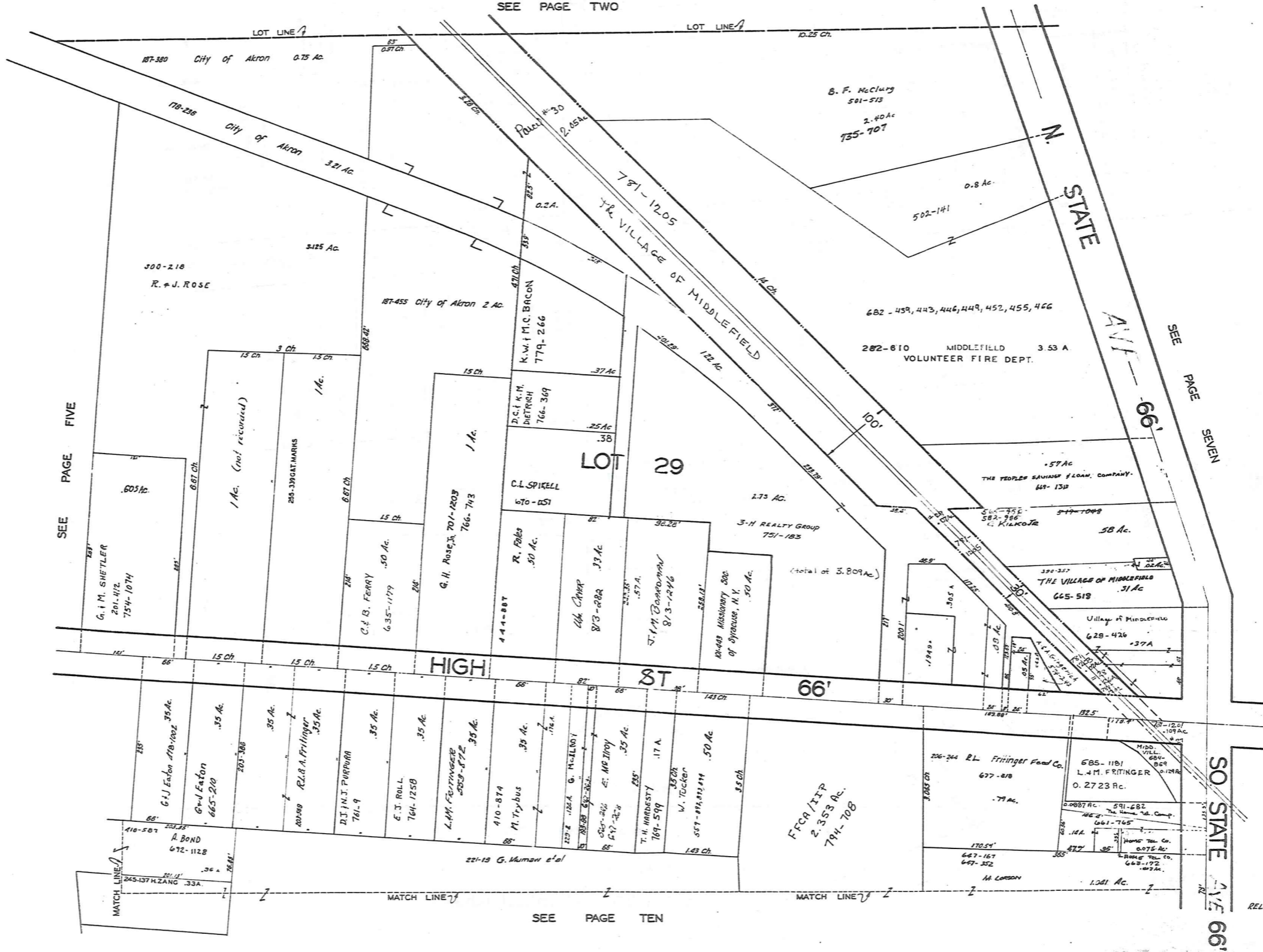
JAN. 1, 1989

SEE PAGE NINE

RELATIVE REPRESENTATION, MIDDLEFIELD VILLAGE PG. 5

MIDDLEFIELD VILLAGE

SEE PAGE TWO



SEE PAGE FIVE

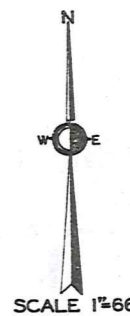
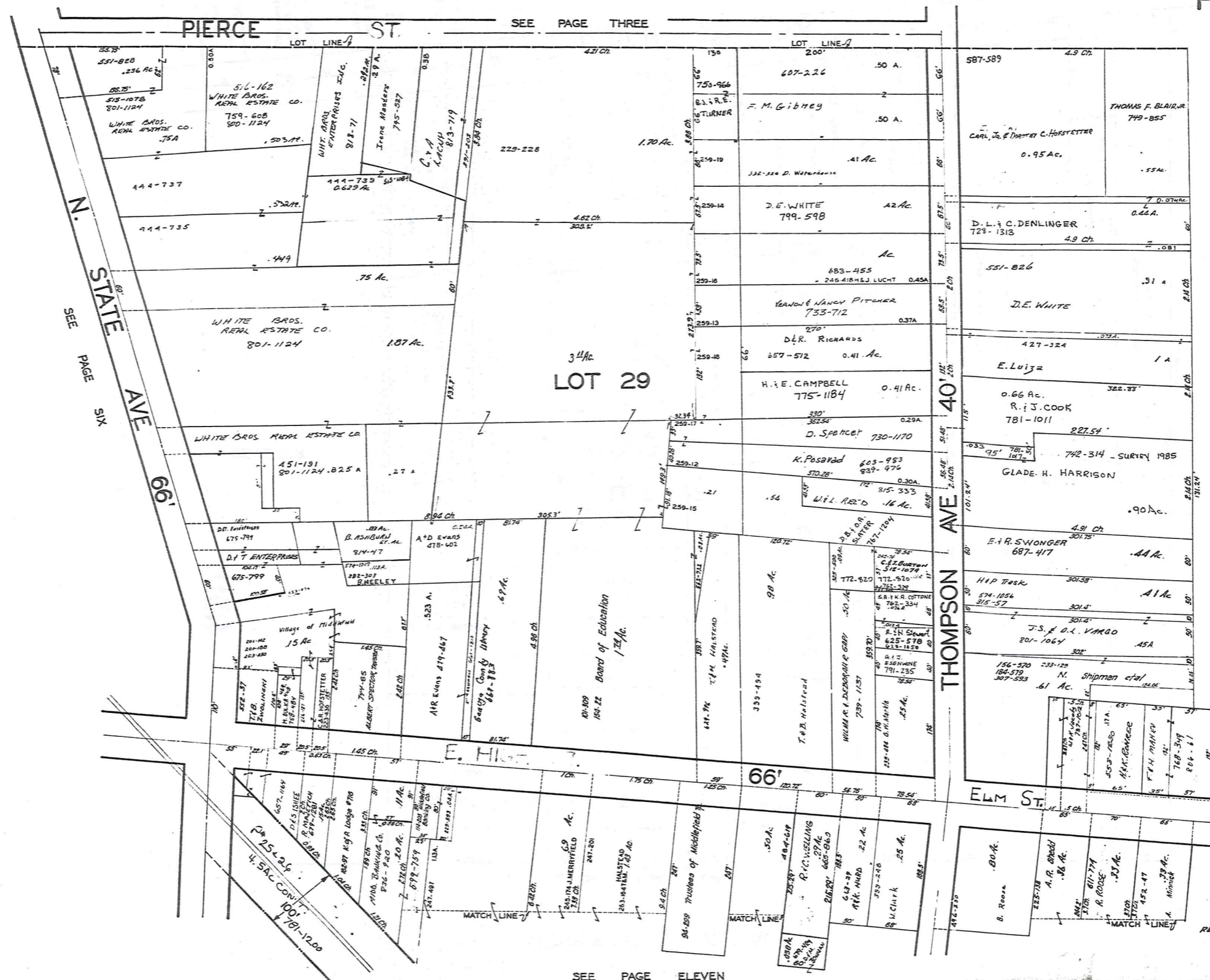
SEE PAGE SEVEN



SEE PAGE TEN

SO STATE AVE 66'

MIDDLEFIELD VILLAGE



SEE PAGE EIGHT

SEE PAGE SIX

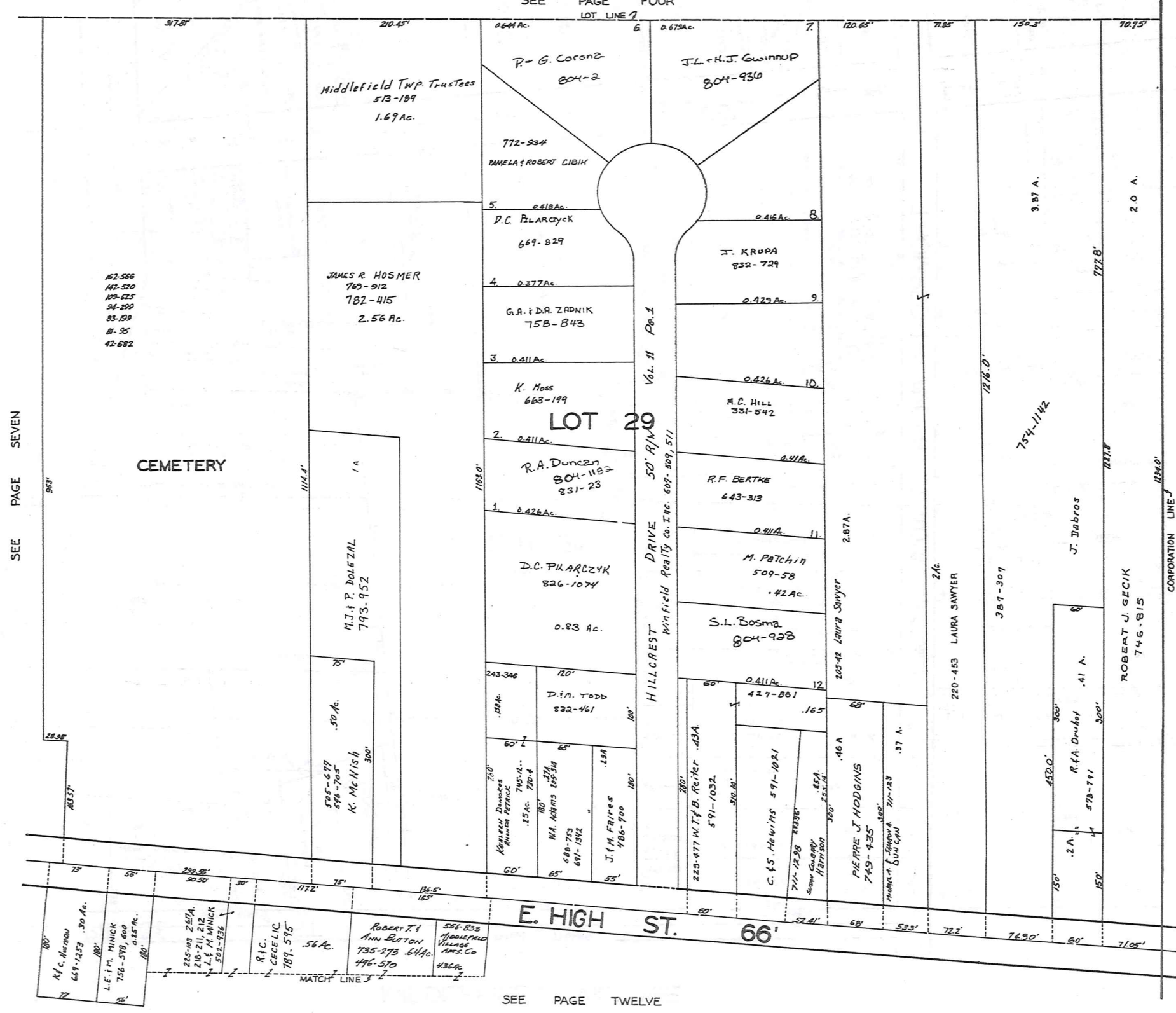
SEE PAGE THREE

SEE PAGE ELEVEN

JANUARY 1, 1969  
 RELATIVE REPRESENTATION  
 MIDDLEFIELD VILLAGE  
 PG. 7

MIDDLEFIELD VILLAGE

SEE PAGE FOUR



SEE PAGE SEVEN

42-566  
 42-520  
 42-525  
 84-599  
 83-199  
 8-55  
 42-682

CEMETERY

E. HIGH ST. 66'

SEE PAGE TWELVE



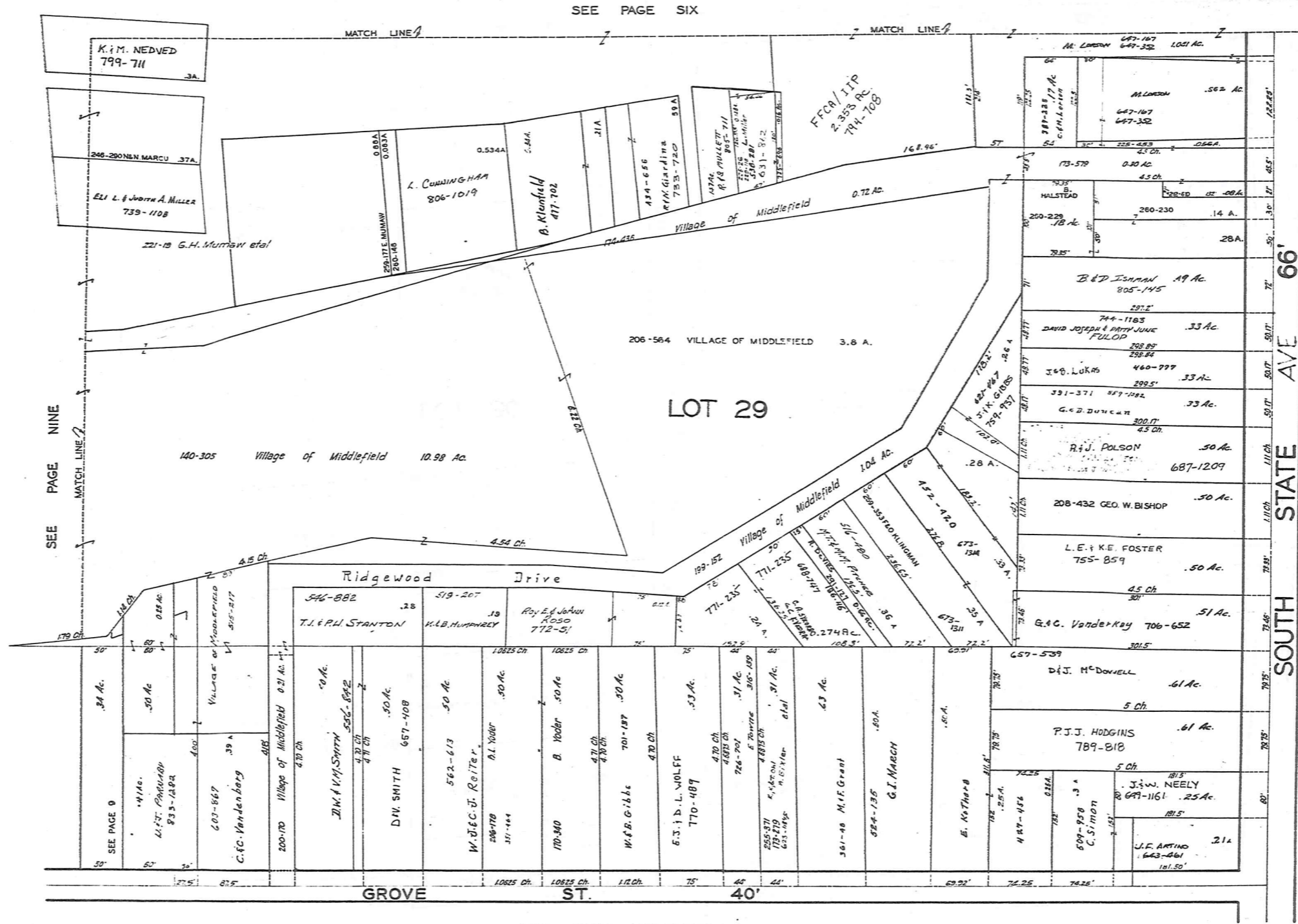
SCALE 1"=66'

JAN. 1, 1989

RELATIVE REPRESENTATION  
 MIDDLEFIELD VILLAGE  
 PG. 8



MIDDLEFIELD VILLAGE



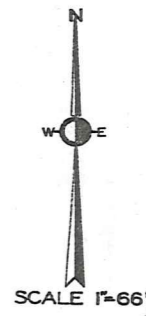
SEE PAGE NINE

SEE PAGE SIX

SEE PAGE FOURTEEN

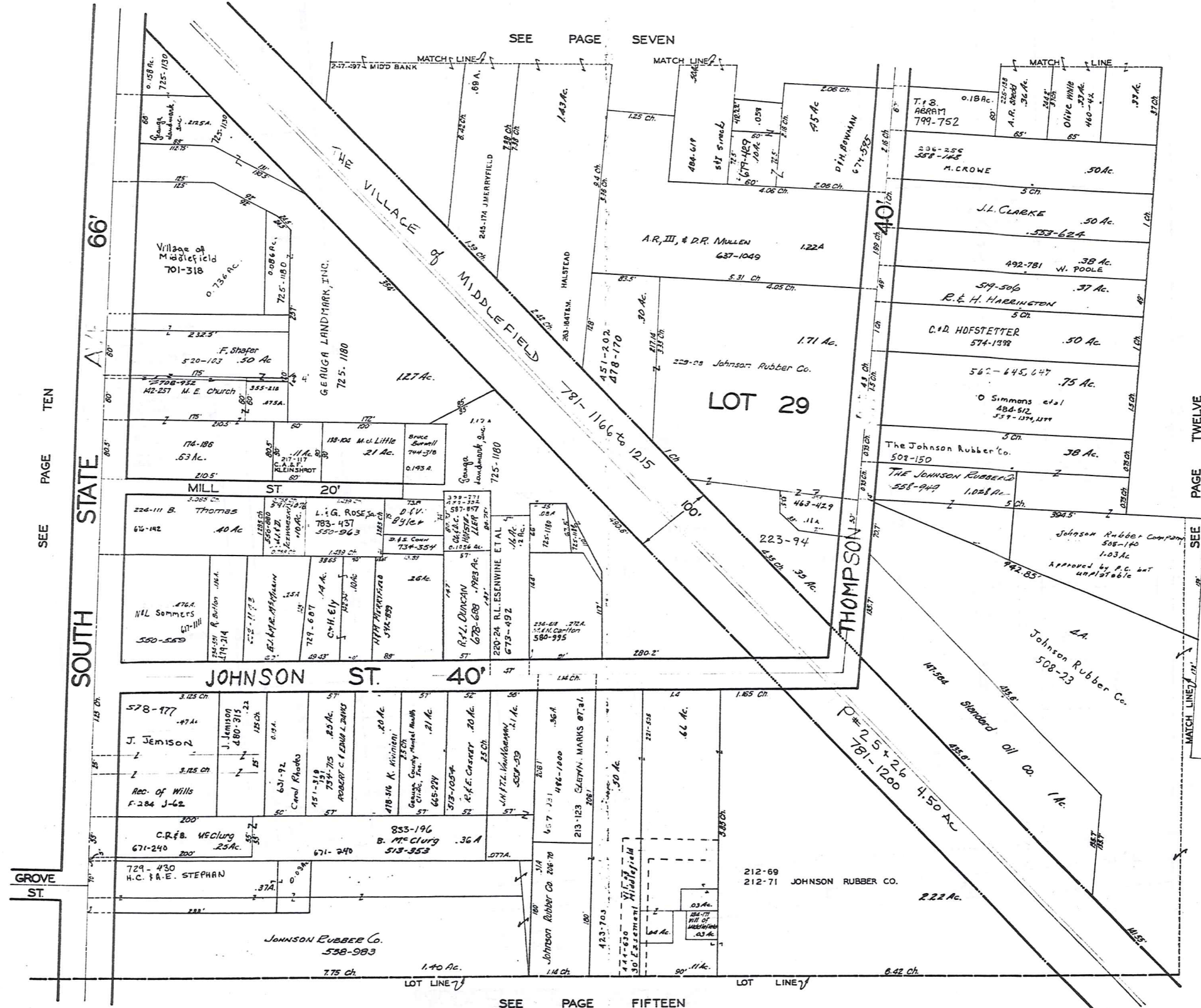
66' SOUTH STATE AVE

SEE PAGE ELEVEN



JAN. 1, 1989

MIDDLEFIELD VILLAGE



SEE PAGE TEN

SEE PAGE SEVEN

SEE PAGE TWELVE

SEE PAGE FIFTEEN



SCALE 1"=66'

JAN. 1, 1989

RELATIVE REPRESENTATION

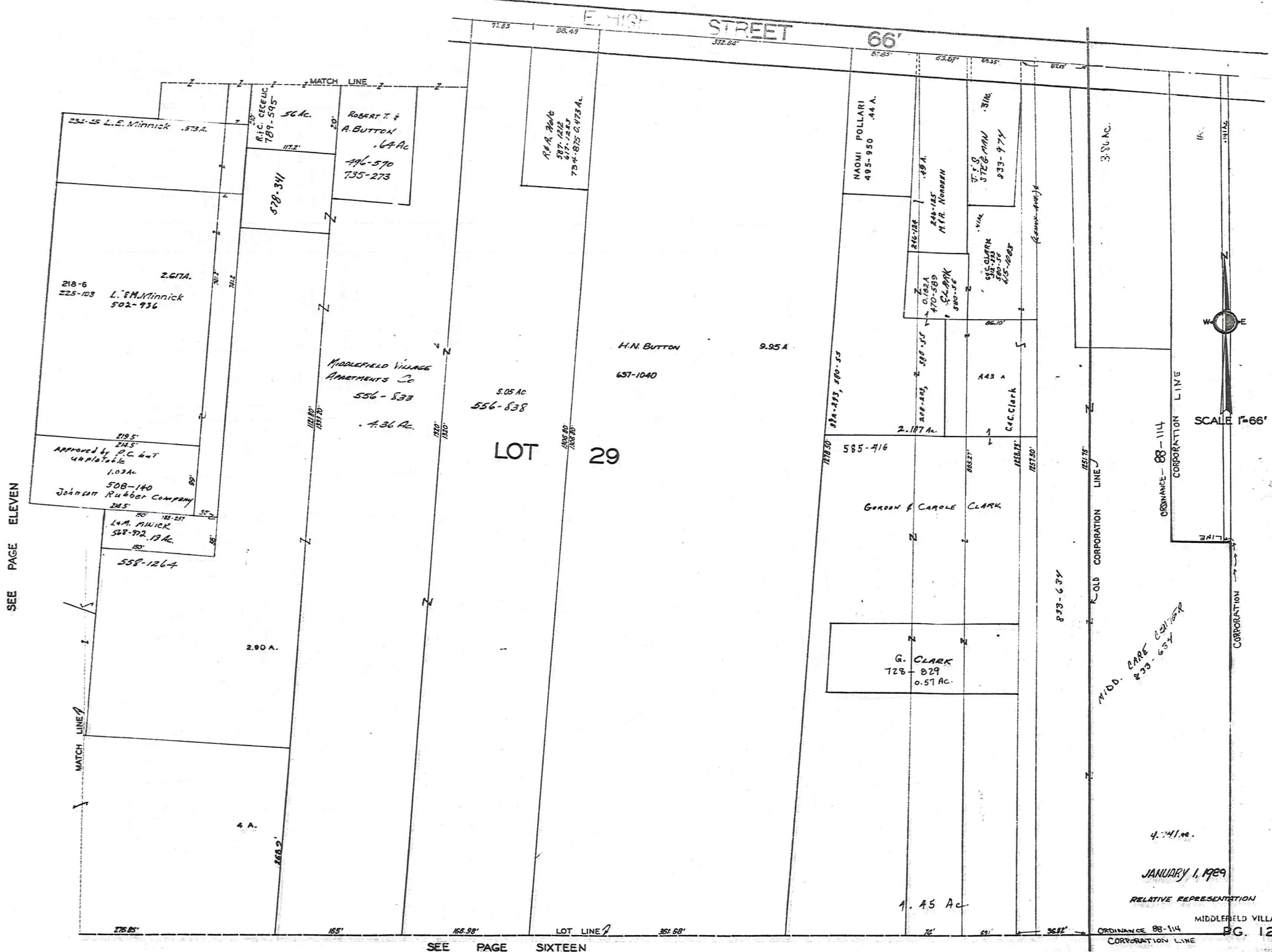
MIDDLEFIELD VILLAGE

PG. 11

287

MIDDLEFIELD VILLAGE

SEE PAGE EIGHT



SEE PAGE ELEVEN

SEE PAGE SIXTEEN



SCALE 1"=66'

JANUARY 1, 1929

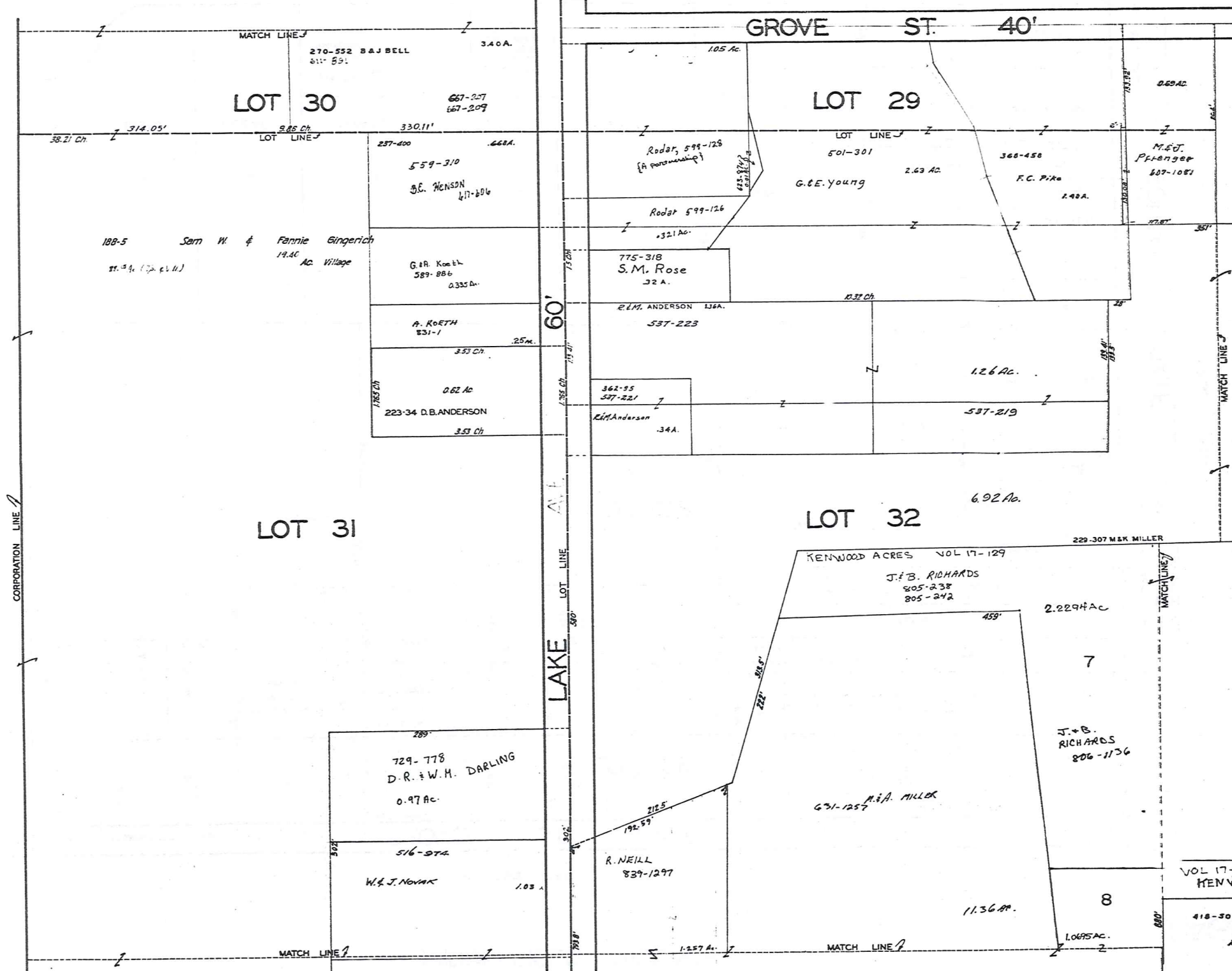
RELATIVE REPRESENTATION

MIDDLEFIELD VILLAGE

ORDINANCE 88-114 PG. 12 CORPORATION LINE

MIDDLEFIELD VILLAGE

SEE PAGE NINE



JAN. 1, 1989

SEE PAGE FOURTEEN

SEE PAGE SEVENTEEN

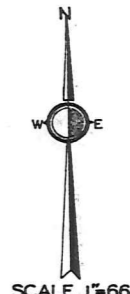
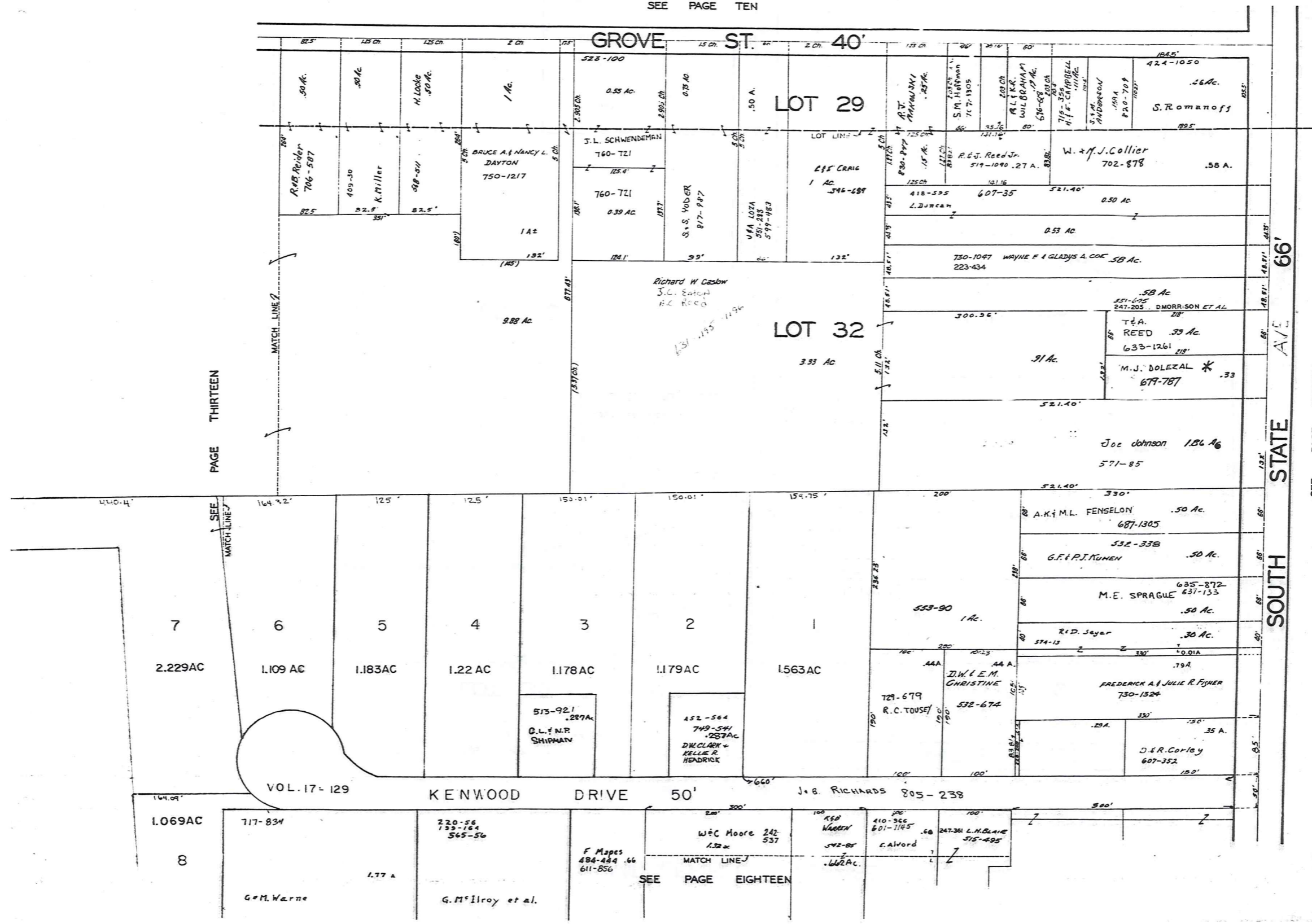
VOL 17-129-130  
 MENWOOD ACRES SUB.  
 418-30  
 RELATIVE REPRESENTATION  
 MIDDLEFIELD VILLAGE  
 PG. 13  
 G. & M. Warner  
 177 A.

MIDDLEFIELD VILLAGE

SEE PAGE TEN

PAGE THIRTEEN

SEE PAGE FIFTEEN

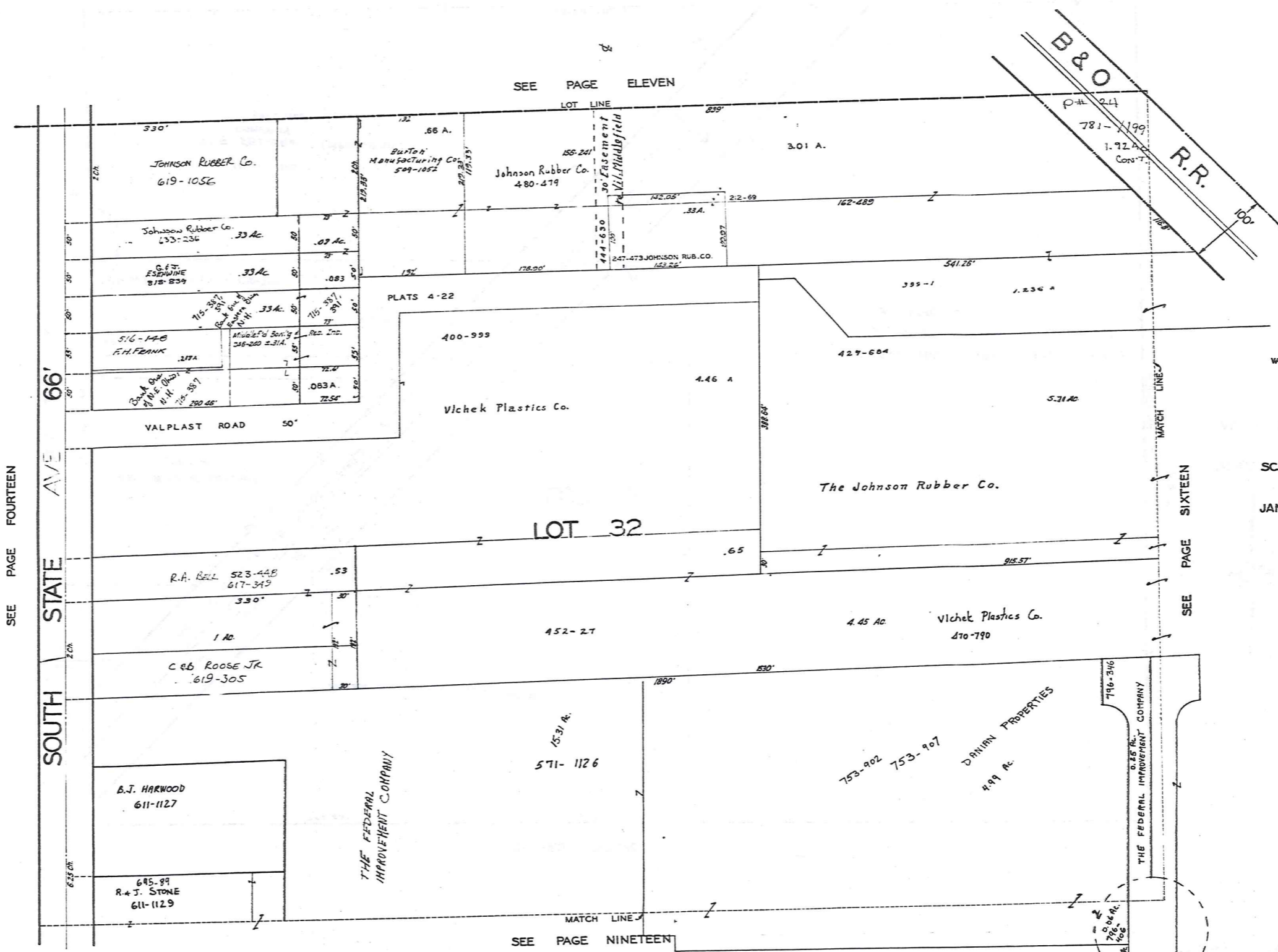


SCALE 1"=66'

JAN. 1, 1989

RELATIVE REPRESENTATION

MIDDLEFIELD VILLAGE PG. 14



SEE PAGE ELEVEN

SEE PAGE FOURTEEN

SEE PAGE SIXTEEN

SEE PAGE NINETEEN



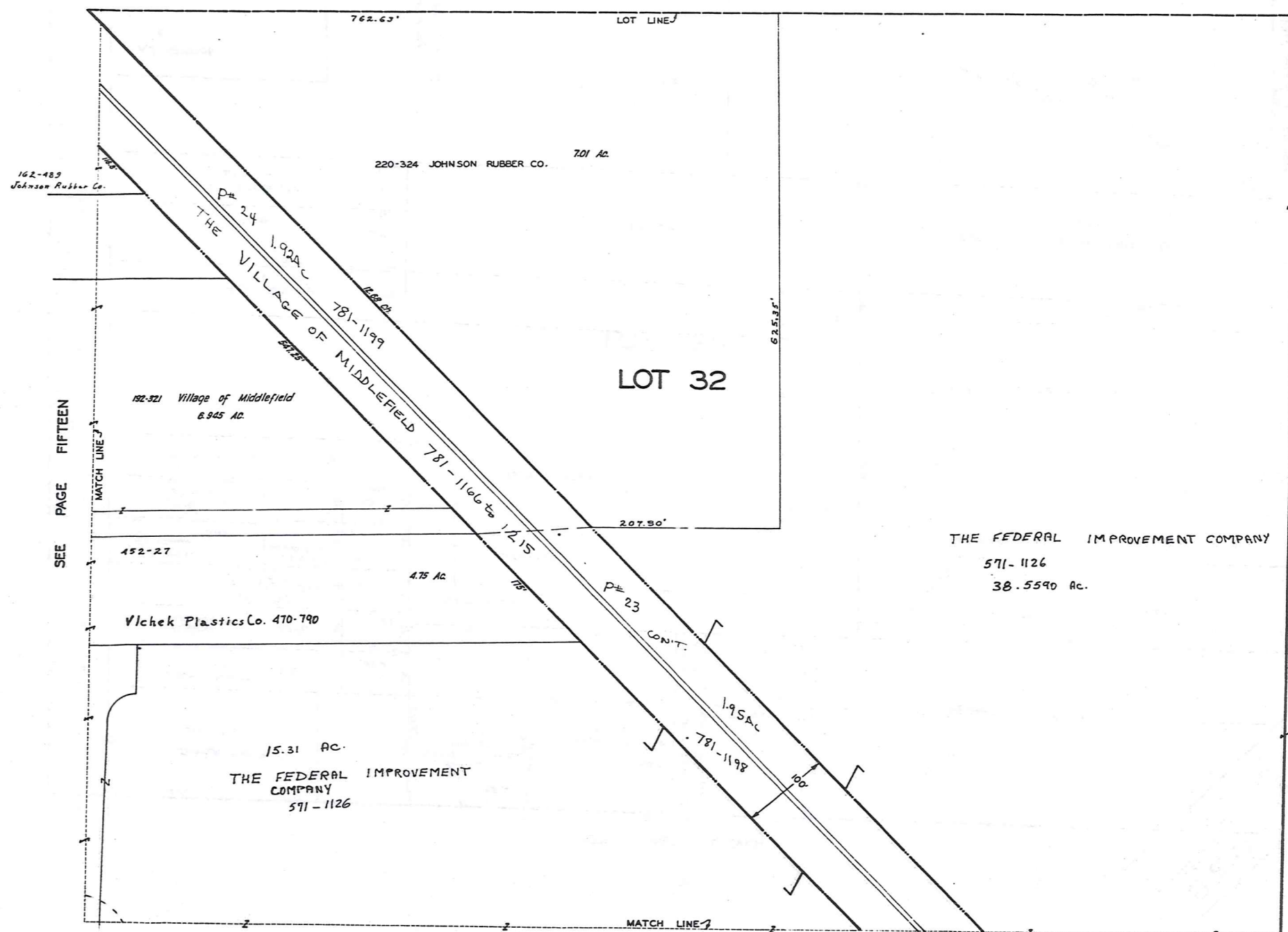
SCALE 1"=66'

JAN. 1, 1989

RELATIVE REPRESENTATION

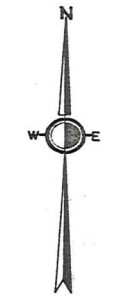
MIDDLEFIELD VILLAGE

SEE PAGE TWELVE



SEE PAGE FIFTEEN

SEE PAGE 21



SCALE 1"=66'

JAN. 1, 1989

THE FEDERAL IMPROVEMENT COMPANY  
 571-1126  
 38.5590 AC.

SEE PAGE TWENTY

RELATIVE REPRESENTATION

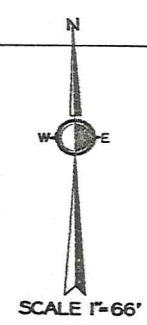
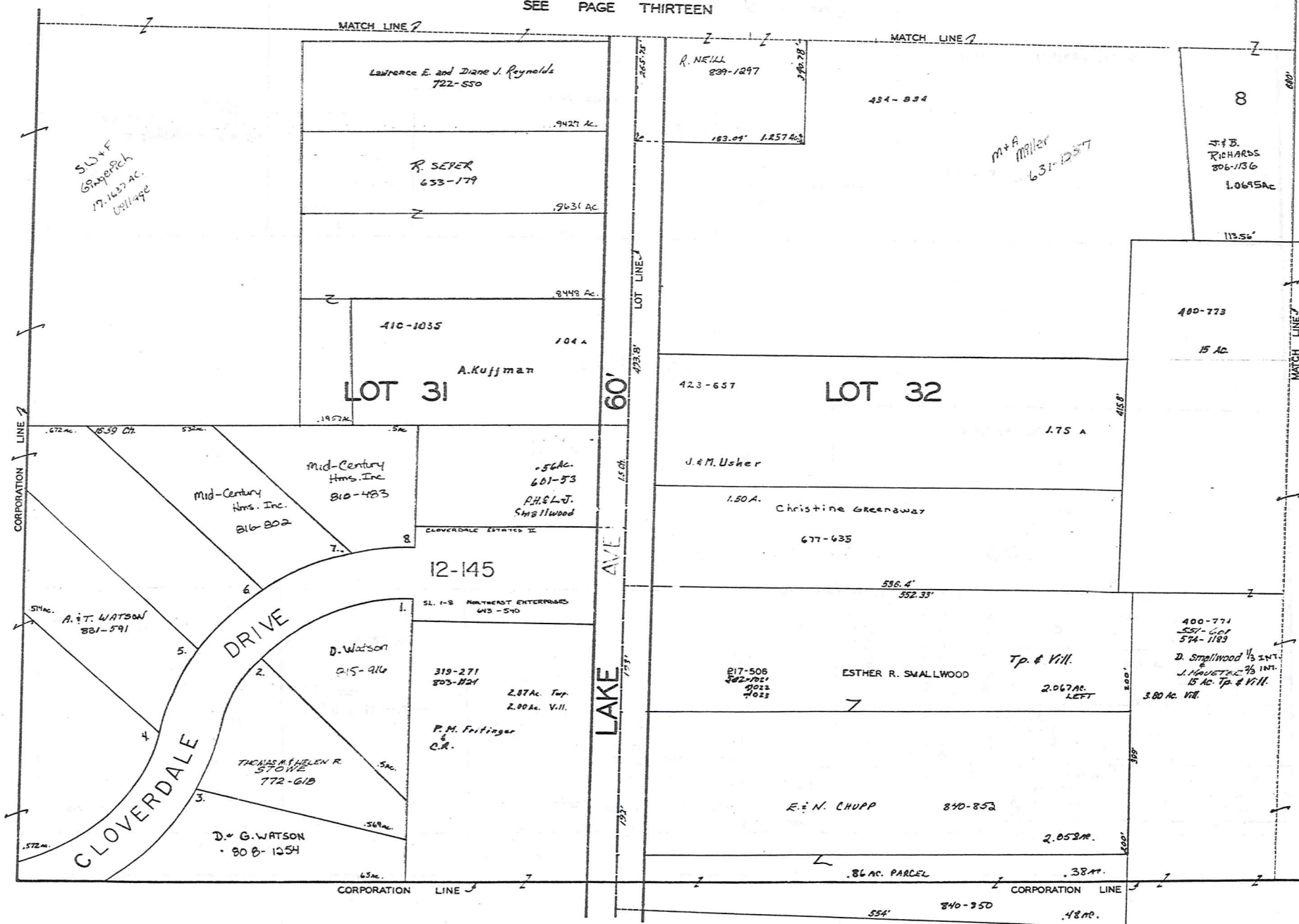
MIDDLEFIELD VILLAGE

VOL 17-129  
KENWOOD ACRES SUB.

418-50

1.77 A

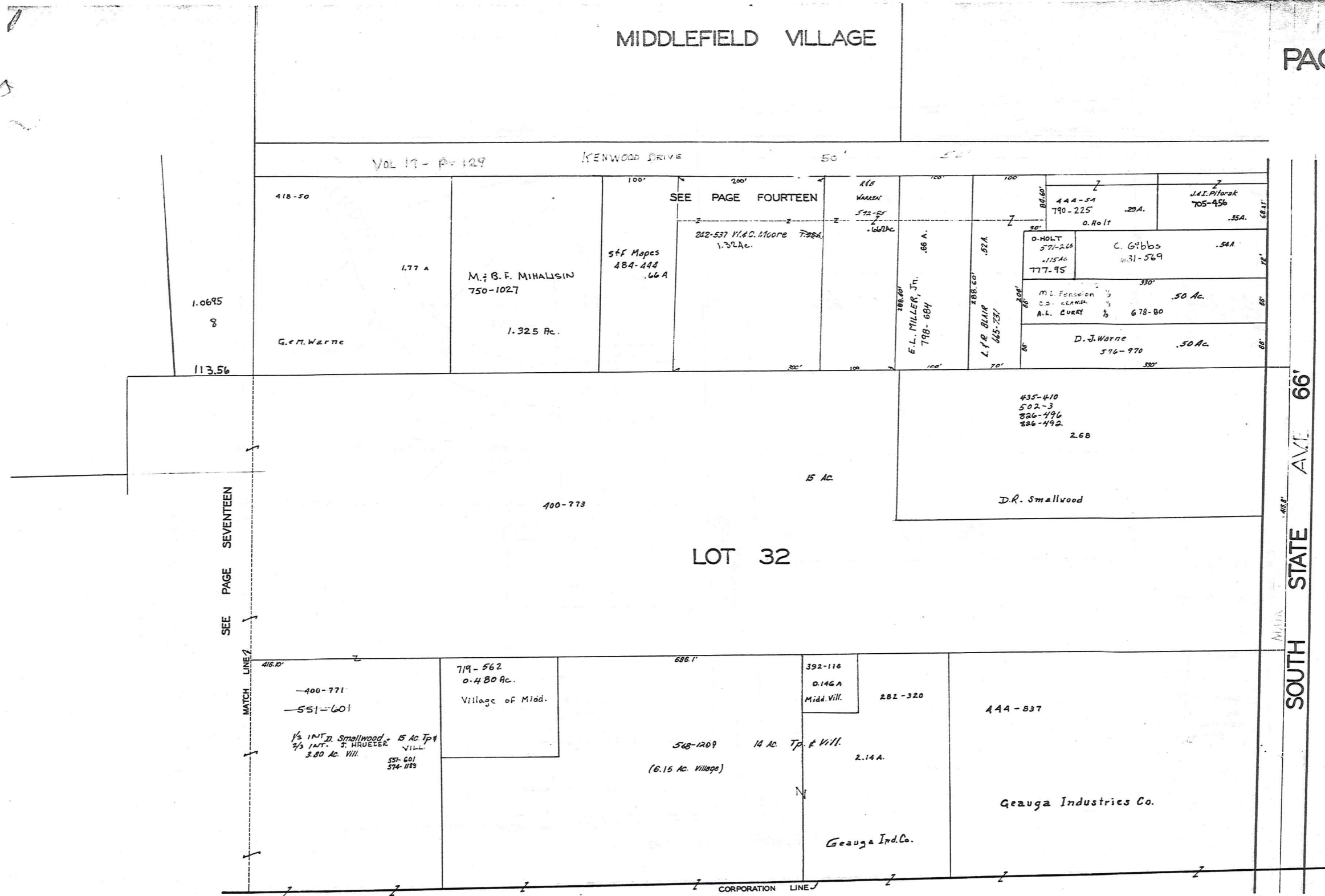
SEE PAGE THIRTEEN



SEE PAGE EIGHTEEN

JANUARY 1, 1989  
RELATIVE REPRESENTATION

MIDDLEFIELD VILLAGE

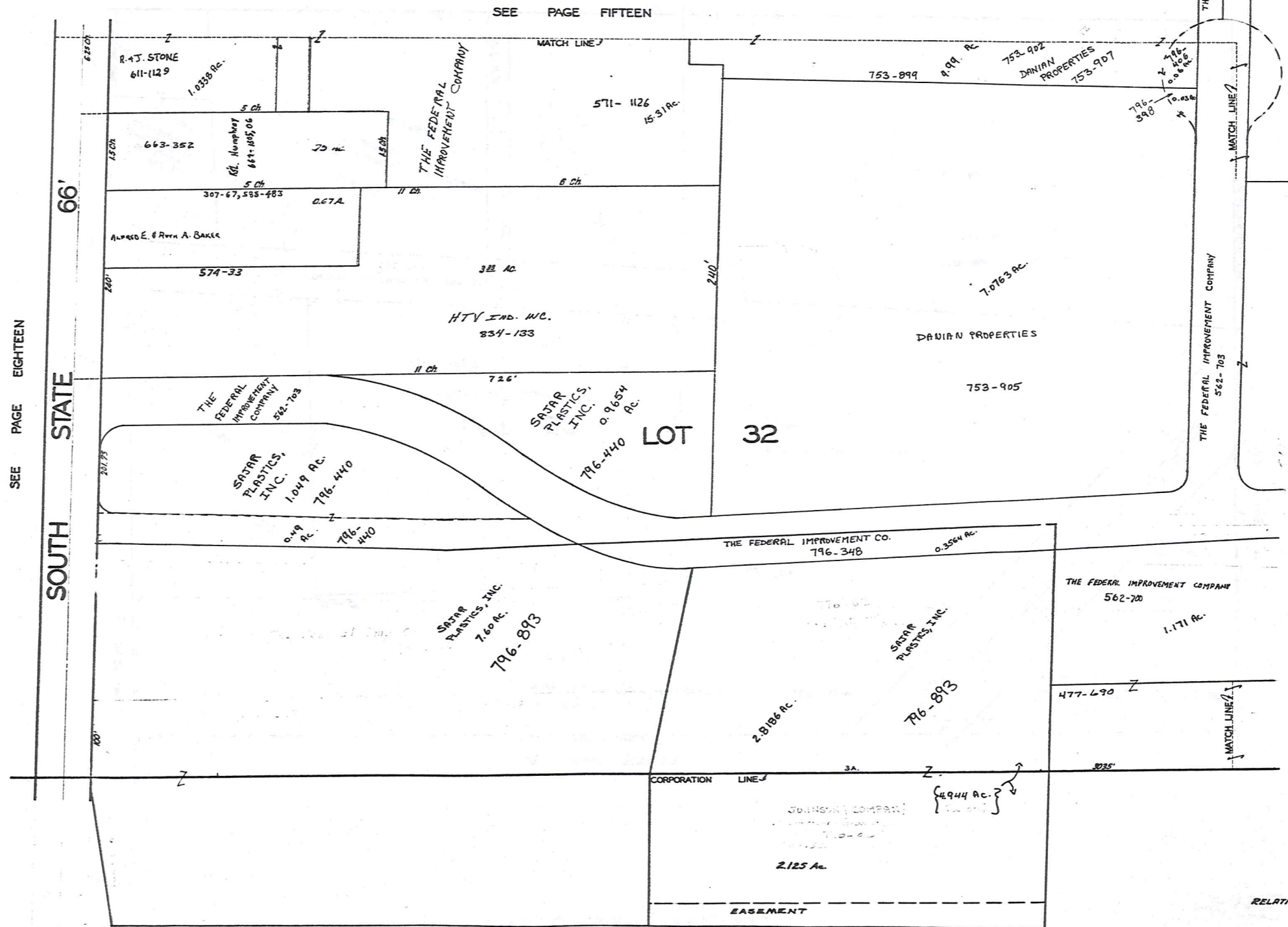


SEE PAGE SEVENTEEN

SEE PAGE NINETEEN

SOUTH STATE AVE 66'

MIDDLEFIELD VILLAGE

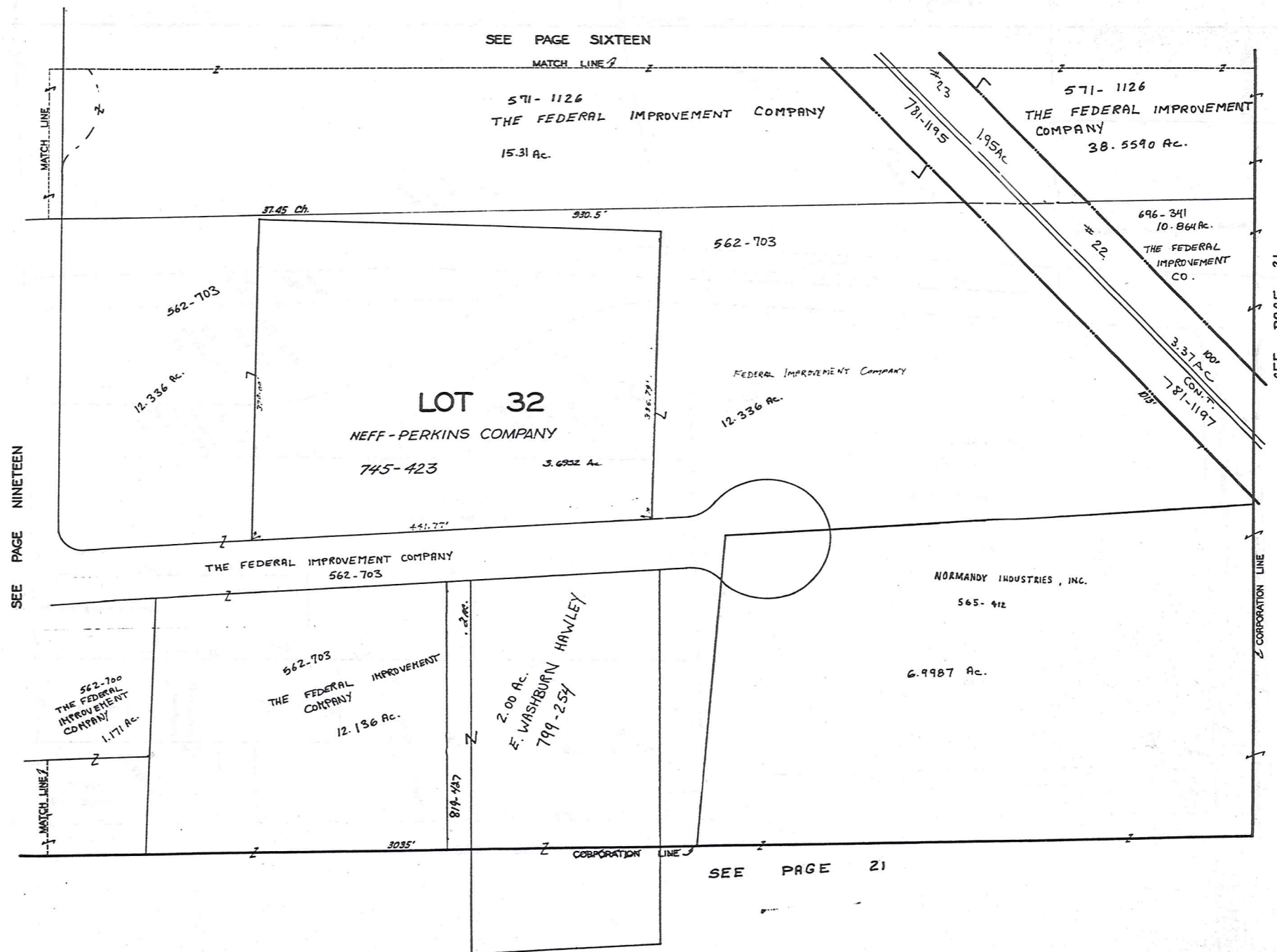


JAN. 1, 1989

RELATIVE REPRESENTATION

MIDDLEFIELD VILLAGE PG. 19

MIDDLEFIELD VILLAGE

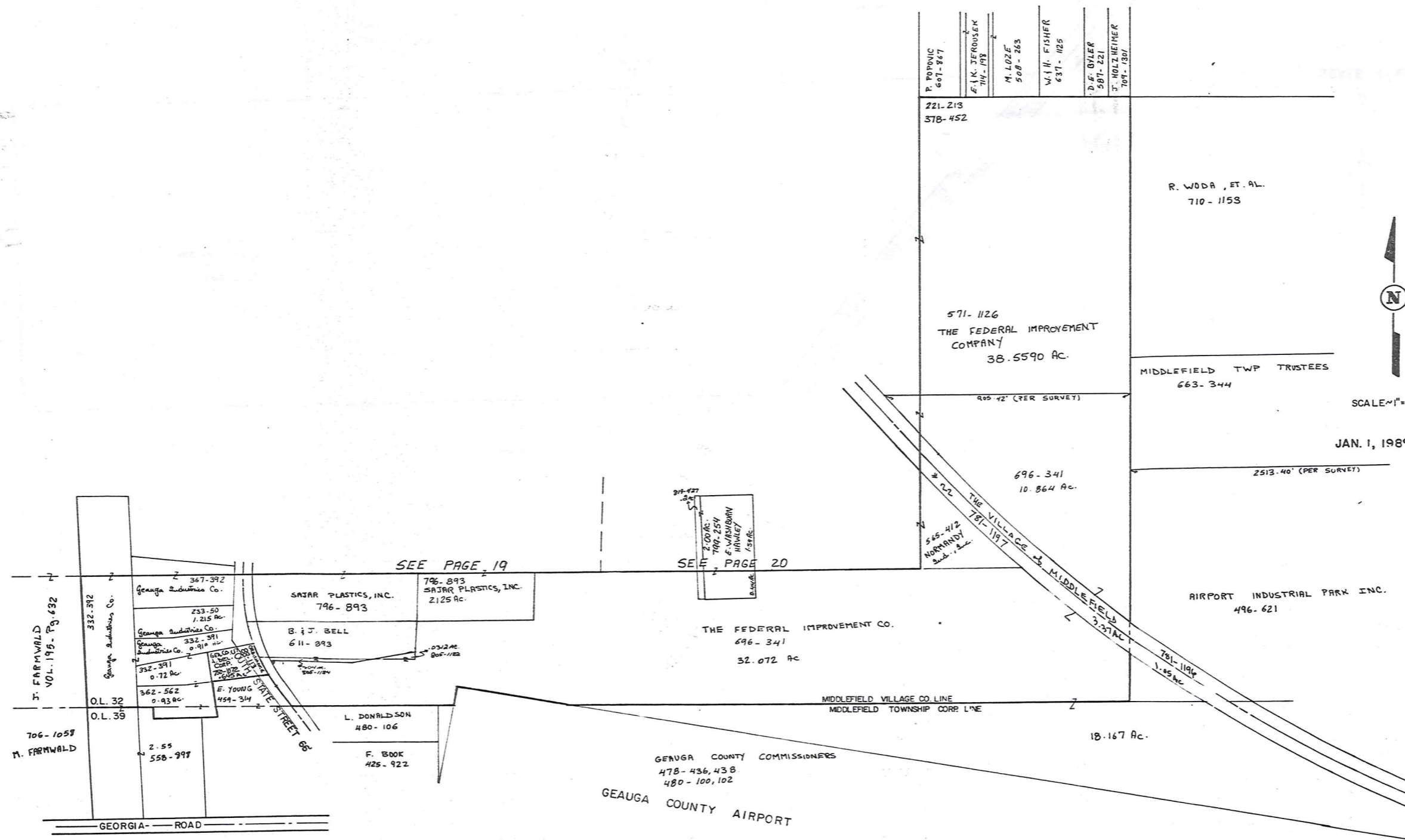


SCALE 1"=66'

JAN 1, 1989

RELATIVE REPRESENTATION

MIDDLEFIELD VILLAGE  
PG. 20



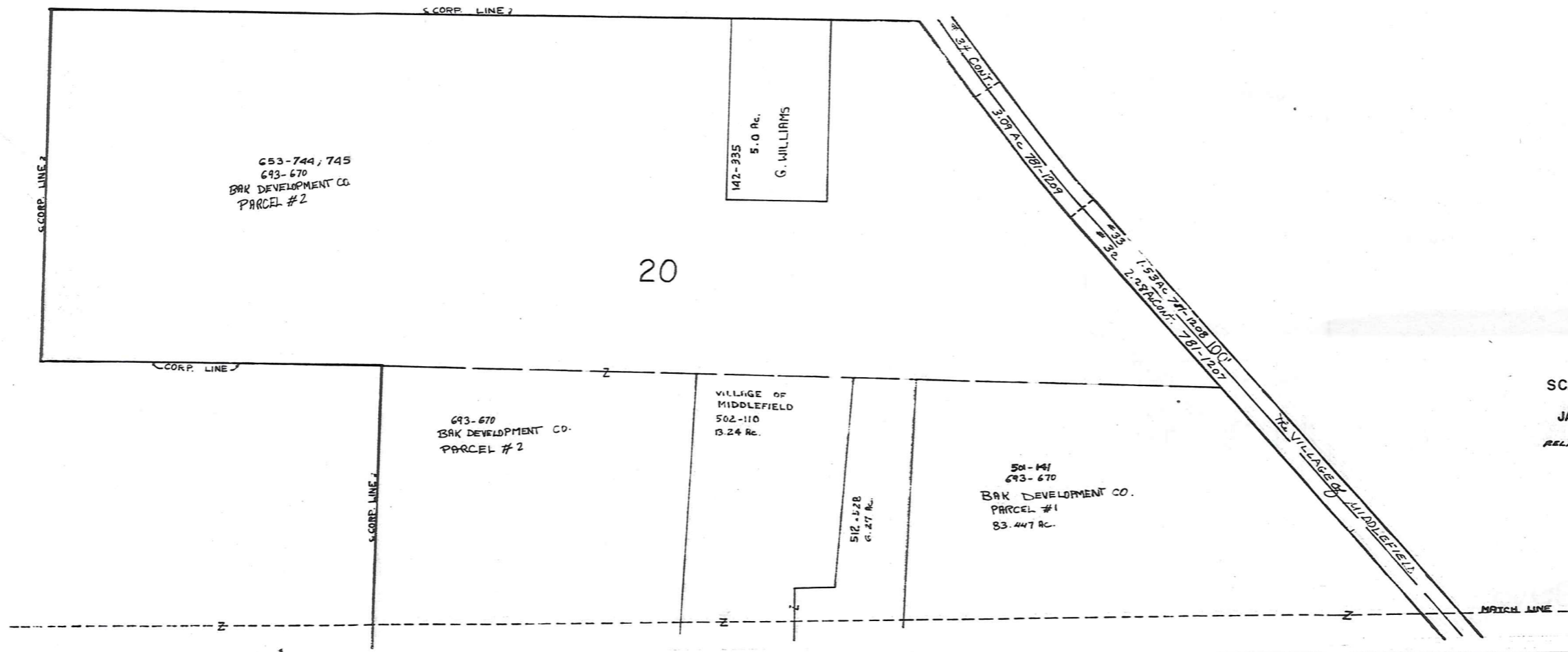
SCALE 1" = 200'

JAN. 1, 1989

# MIDDLEFIELD VILLAGE

RELATIVE REPRESENTATION

W. WALDEN



653-744, 745  
693-670  
BAK DEVELOPMENT CO.  
PARCEL #2

142-335  
5.0 Ac.  
G. WILLIAMS

20

693-670  
BAK DEVELOPMENT CO.  
PARCEL #2

VILLAGE OF  
MIDDLEFIELD  
502-110  
13.24 Ac.

512-128  
61.27 Ac.

501-141  
693-670  
BAK DEVELOPMENT CO.  
PARCEL #1  
83.447 Ac.

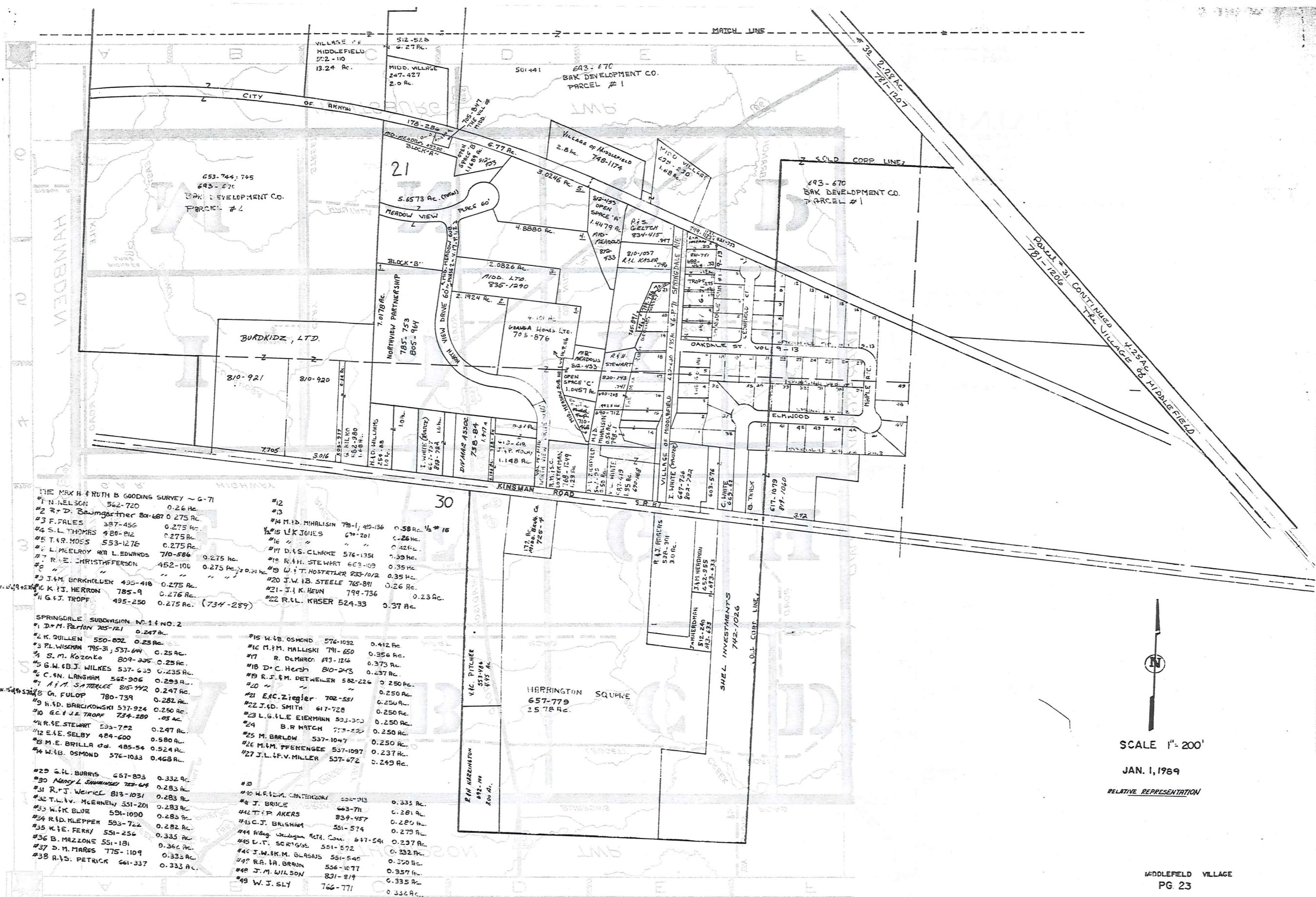


SCALE 1" = 200'

JAN. 1, 1989

RELATIVE REPRESENTATION

MIDDLEFIELD VLLAGE  
PG. 22



THE MAX H & RUTH B GOODING SURVEY - G-71

#1 N. NELSON	562-720	0.26 Ac.	#12		
#2 R. D. Baumgartner	801-667	0.275 Ac.	#13		
#3 F. FALES	387-456	0.275 Ac.	#14 M.D. Mihalisin	790-1, 410-136	0.58 Ac. 1/2 #15
#4 S.L. THOMAS	420-212	0.275 Ac.	#15 L.K. JONES	670-201	0.26 Ac.
#5 T.R. MOSS	553-1276	0.275 Ac.	#16		0.42 Ac.
#6 L. McELROY & L. EDWARDS	710-586	0.275 Ac.	#17 D.S. CLARKE	576-1351	0.39 Ac.
#7 R. E. CHRISTOFFERSON	452-100	0.275 Ac. 2.01 Ac.	#18 R.H. STEWART	663-109	0.35 Ac.
#8 J.M. BORKHOLDER	435-418	0.275 Ac.	#19 W.T. HOSTETLER	833-102	0.35 Ac.
#9 K.J. HERRON	785-9	0.276 Ac.	#20 J.W.B. STEELE	765-891	0.26 Ac.
#10 G.J. TROFF	495-250	0.275 Ac. (734-289)	#21 J.I. KEVIN	799-736	0.23 Ac.
			#22 R.L. KASER	524-33	0.37 Ac.

SPRINGDALE SUBDIVISION NO. 1 & NO. 2

#1 D.M. PAXTON	705-121	0.247 Ac.	#15 W.B. OSMOND	576-1032	0.412 Ac.
#2 K. DULLEN	550-892	0.25 Ac.	#16 M.F.M. MALLUSKI	791-650	0.356 Ac.
#3 P.L. WISEMAN	795-31, 537-644	0.25 Ac.	#17 R. DEMARCO	693-126	0.373 Ac.
#4 S.M. KOZENKO	809-235	0.25 Ac.	#18 D.C. HERSH	810-243	0.237 Ac.
#5 G.W. & B.J. WILKES	537-633	0.235 Ac.	#19 R.J.F.M. DETWILER	582-226	0.250 Ac.
#6 C.F.N. LANGHAM	562-906	0.293 Ac.	#20		0.250 Ac.
#7 A.I.A. SATTERLEE	805-192	0.247 Ac.	#21 E.C. Ziegler	702-551	0.250 Ac.
#8 G. FULOP	780-739	0.282 Ac.	#22 J.D. SMITH	617-728	0.250 Ac.
#9 H.D. BARCZKOWSKI	537-924	0.250 Ac.	#23 L.G.L.E. EIERMANN	593-303	0.250 Ac.
#10 G.C. & J.E. TROFF	734-289	.03 Ac.	#24 B.R. HATCH	713-523	0.250 Ac.
#11 R.E. STEWART	533-722	0.247 Ac.	#25 M. BARLOW	537-1047	0.250 Ac.
#12 E.E. SELBY	484-600	0.580 Ac.	#26 M.M. PFENEGEE	537-1097	0.237 Ac.
#13 M.E. BRILLA	485-54	0.524 Ac.	#27 J.L. & V. MILLER	537-672	0.249 Ac.
#14 W.B. OSMOND	576-1033	0.468 Ac.			

#29 G.H. BARRIS	657-893	0.332 Ac.	#30		
#30 Nancy L. SHANNON	729-644	0.283 Ac.	#31 W.R. & M. CARPENTER	550-012	0.333 Ac.
#31 R.T.J. Weirick	813-1031	0.283 Ac.	#32 J. BRUCE	663-771	0.281 Ac.
#32 T.L.V. McEENEY	531-201	0.283 Ac.	#33 T.P. AKERS	839-457	0.280 Ac.
#33 W.K. BLUE	591-1090	0.283 Ac.	#34 C.J. BRISHAM	551-574	0.279 Ac.
#34 R.D. KLEPPEN	593-724	0.282 Ac.	#35 R. & W. WILSON	647-541	0.237 Ac.
#35 K.F.E. FERRY	551-256	0.335 Ac.	#36 L.T. SCRIGGS	551-572	0.232 Ac.
#36 B. MAZZONE	551-181	0.362 Ac.	#37 J.W.M. BLASUS	551-540	0.350 Ac.
#37 D.M. MARES	775-1109	0.333 Ac.	#38 R.A. & A. BRAUN	556-1077	0.357 Ac.
#38 A.S. PETRICK	661-337	0.333 Ac.	#39 J.M. WILSON	831-819	0.335 Ac.
			#40 W.J. SLY	766-771	0.352 Ac.

SCALE 1" = 200'

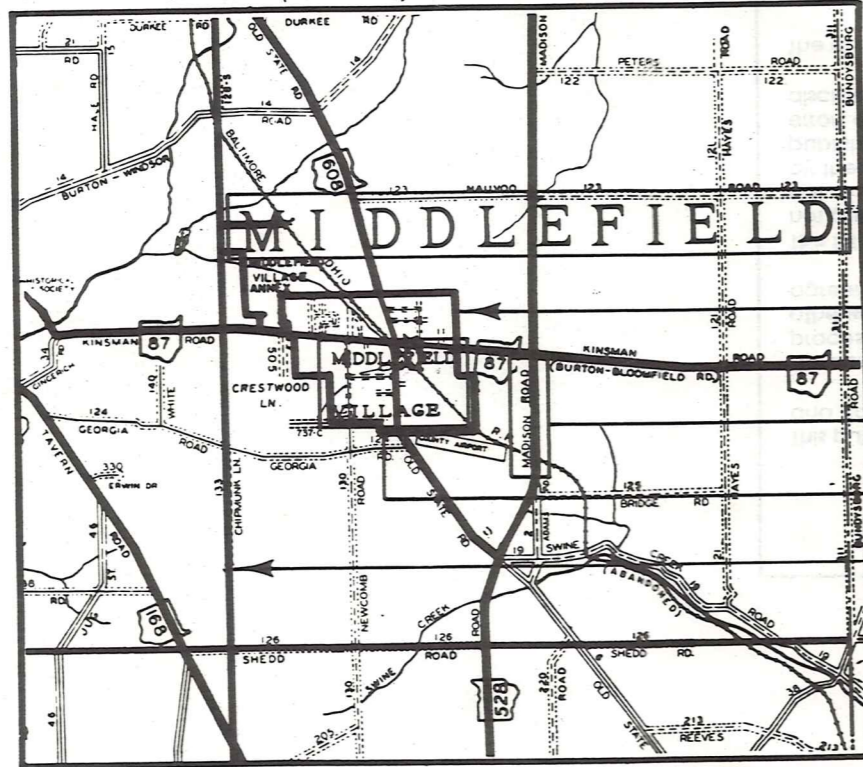
JAN. 1, 1989

RELATIVE REPRESENTATION

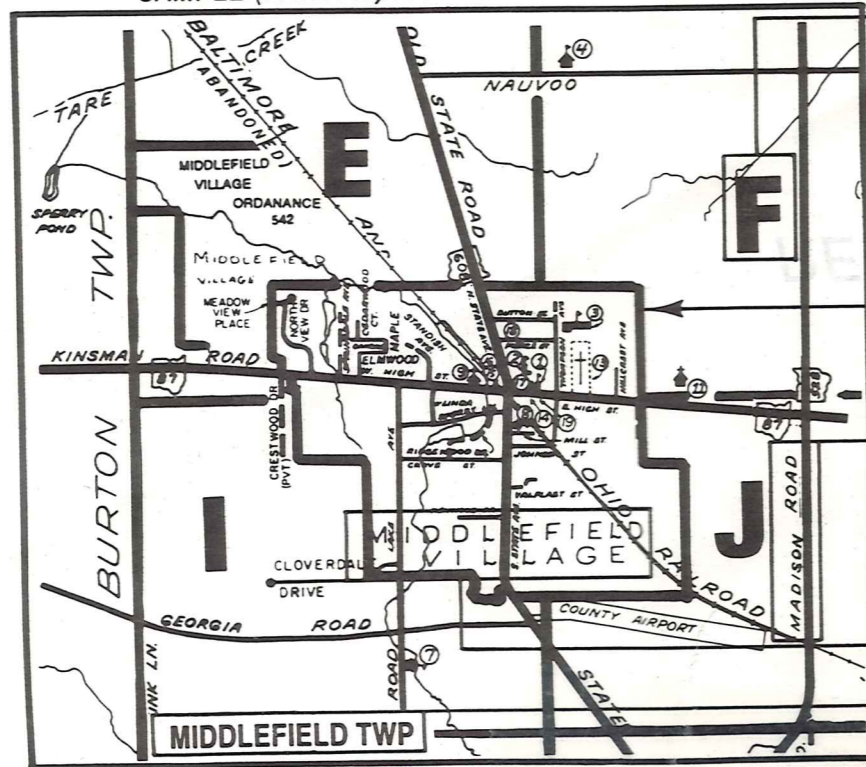
# Explanation and Use Sheet for Geauga County, Ohio

A

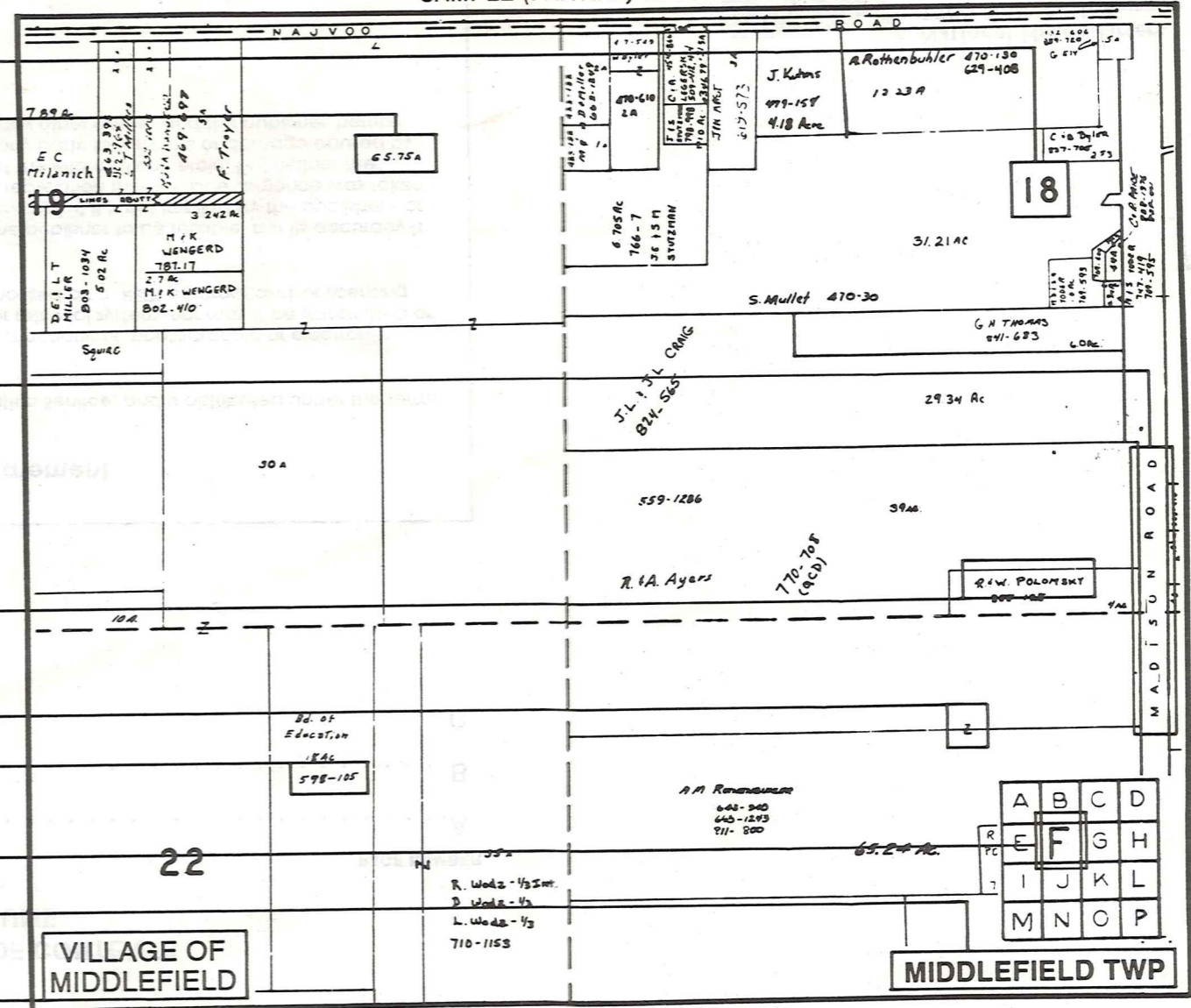
SAMPLE (PARTIAL) COUNTY INDEX MAP



SAMPLE (PARTIAL) MUNICIPALITY INDEX MAP



SAMPLE (PARTIAL) MAP PAGE



- Tract Lot Number
- Acreage
- Township Name
- Village Boundary
- Street Name
- Village Name
- Township Boundary
- Owners Name
- Denotes Continuous Ownership
- Deed Book & Page
- Map Page Number
- Township Name
- Village Name

- Village Boundary
- Street Name
- Village Name
- Township Name

USE OF THE MAP VOLUME

1. LOCATE THE GENERAL AREA OF INTEREST ON THE COUNTY INDEX MAP AND NOTE THE MUNICIPALITY NAME (TOWNSHIP OR VILLAGE).
  2. REFER TO THE TABLE OF CONTENTS AND NOTE THE BEGINNING ATLAS PAGE NUMBER FOR THE MUNICIPALITY OF INTEREST.
  3. TURN TO THE PAGE INDICATED, ON THIS PAGE WILL APPEAR AN INDEX MAP FOR THAT MUNICIPALITY.
  4. LOCATE THE GENERAL AREA OF INTEREST AND NOTE THE MAP PAGE NUMBER. THIS MAY BE EITHER A LETTER OR A NUMBER.
  5. MAP PAGES ARE IN ALPHABETICAL (OR NUMERICAL) SEQUENCE FOLLOWING THE MUNICIPALITY INDEX MAP. FOLLOW SEQUENCE TO THE MAP PAGE INDICATED.
  6. LOCATE SPECIFIC PARCEL OF INTEREST AND NOTE THE DESIRED INFORMATION.
- NOTE: ON SOME MAPS YOU MAY BE REFERRED TO A DETAIL SHEET SHOWING AN ENLARGEMENT OF THE AREA. THESE MAPS ARE FOUND AT THE END OF THE REGULAR MAP PAGES IN EACH MUNICIPALITY IN EITHER ALPHABETICAL OR NUMERICAL SEQUENCE.
- NOTE: CHARDON VILLAGE HAS TITLE SHEETS. TO LOCATE OWNERS NAME, NOTE THE PARCEL NUMBER, REFER TO THE TITLE PAGE FOLLOWING THE MAP OF INTEREST, FOLLOW NUMERICAL SEQUENCE TO THE PARCEL NUMBER OF INTEREST AND NOTE THE DESIRED INFORMATION. IN ALL OTHER MUNICIPALITIES THE OWNERS NAME APPEARS ON THE MAP PAGE.